

KRIT'S PORTFOLIO



2007-2023

ARCHITECTURAL WORKS
by: KRIT VICHEANSIN



CONTENTS

■ Hotels, Hostels and other Accommodation

- W Retreat, Samui
- Sanya Sofitel, Hainan PRC
- Crowne Plaza Hotel at Nan Chang, Wan Li Qu Jiang Xi PRC
- Yitian West street, Yangshou PRC
- Research and Conceptual Plan of Binjiang Road Embankment in Tunxi Old Street, Huangshan PRC
- The Hong Kong University of Science and Technology (HKUST) Global Graduate Tower, Kowloon HK
- Po Leung Kuk Youth Hostel, Yuen Long HK

■ Retails and Mixed-use Projects

- Cotai Strip Parcel 7&8, south of Macao
- Beijing Feng Tai Mixed-Use Development Project, Beijing PRC
- Guangzhou Matsunichi HQ Towers, Guangzhou PRC
- San Po Kong Holistic Centre, Kowloon HK
- Beijing Feng Tai Mixed-Use Development Project, Beijing PRC
- Commercial Development Project at Zhongshan port, Zhongshan PRC
- Scout Association of Hong Kong Redevelopment, Wanchai HK
- The mixed-use development in Honghuagang District, Zunyi PRC

■ Hospitality and Healthcare

- Gleneagles Hong Kong Hospital, Aberdeen HK
- St. John College East & West wings redevelopment, Pok Fu Lam HK
- Junk Bay Chinese Permanent Cemetary, Sandy Bay HK

■ Miscellaneous

- Design and Construction of Redevelopment of Queen Mary Hospital Phs 1, Aberdeen HK
- Tuen Mun South MTR, Kowloon HK



RMJM, Thailand
W Retreat, Samui



GROUP OF VILLAS



VILLA INTERIOR



MASSING

Conceptual design of 92,800 sq.m. land area in Samui island for 65-75 pool villas, spa and conference, and 15-25 houses

Year 2007
Client: Amburaya Properties (Koh Samui) Co., Ltd
Status: Completed

P&T Architects and Engineers, HK
Sanya Sofitel, Hainan PRC



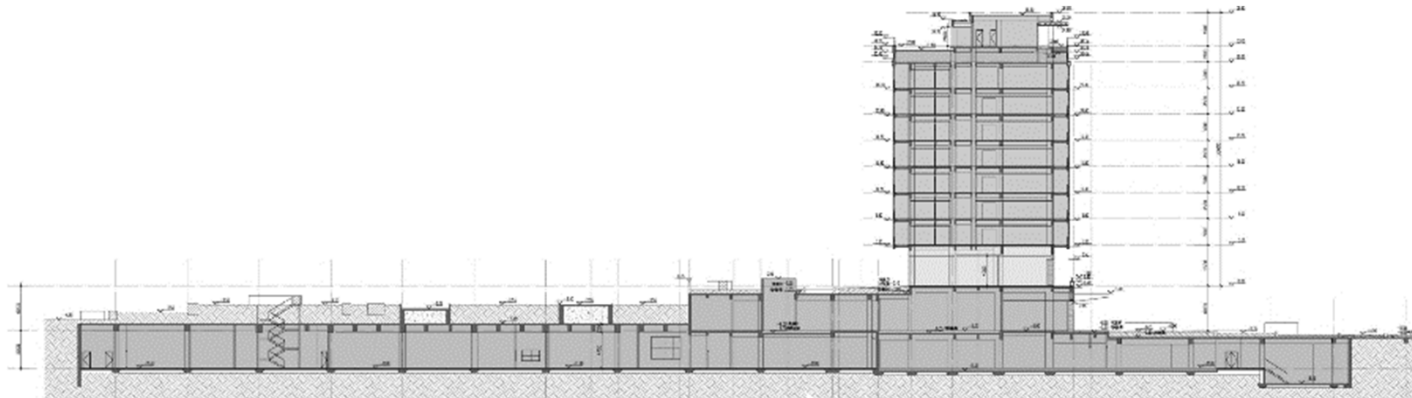
MAIN VEHICULAR ENTRANCE



MAIN HALL



AERIAL VIEW FROM THE BEACH



CROSS SECTION

Located at Sanya PRC, this is a large scale holiday resort development. Including a 5 stars hotel that facilitates 500 guestrooms, 63 villas and other supportive facilities.

Year 2015-2017
Client: Lee & Man Construction Holding Limited
Status: Completed

P&T Architects and Engineers, HK
Crowne Plaza Hotel at Nan Chang, Wan Li Qu Jiang Xi PRC



AERIAL PERSPECTIVE



HOTEL DROP-OFF



PORTE COCHERE INITIAL DESIGN

The Crowne Plaza Hotel development is a 5 star hotel project in Nanchang Shi Poly Celestial Heights property. East and West towers are height of 49.5m and providing total of 286 guestrooms. The Hotel design includes hotel facilities such as ballroom, executive lounge, and conference facilities with spa and hot spring amenities.

Year 2011-2012
Client: China Poly Group
Status: Completed

P&T Architects and Engineers, HK
Yitian West street, Yangshou PRC



AERIAL PERSPECTIVE

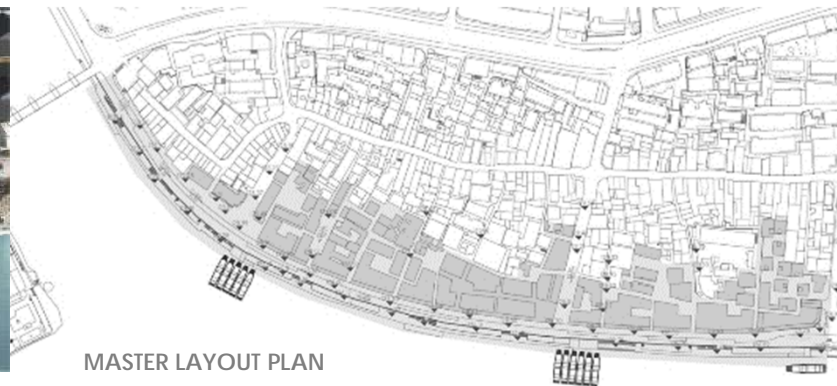


The Chinese old style retails and hotels is located in Yangshou, previously a disused resort built in the 50's, It has an area of 22,659sq.m. and is surrounded on two sides by an existing lake. The 3 storey project includes shops, restaurants and a Boutique Hotel with a basement carpark and has a GFA of 31,720 sq.m.

Year 2016-2019
Client: Yitian Group
Status: Completed

P&T Architects and Engineers, HK

Research and Conceptual Plan of Binjiang Road Embankment in Tunxi Old Street, Huangshan PRC



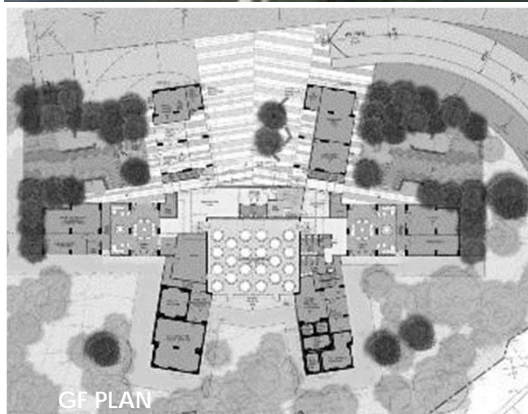
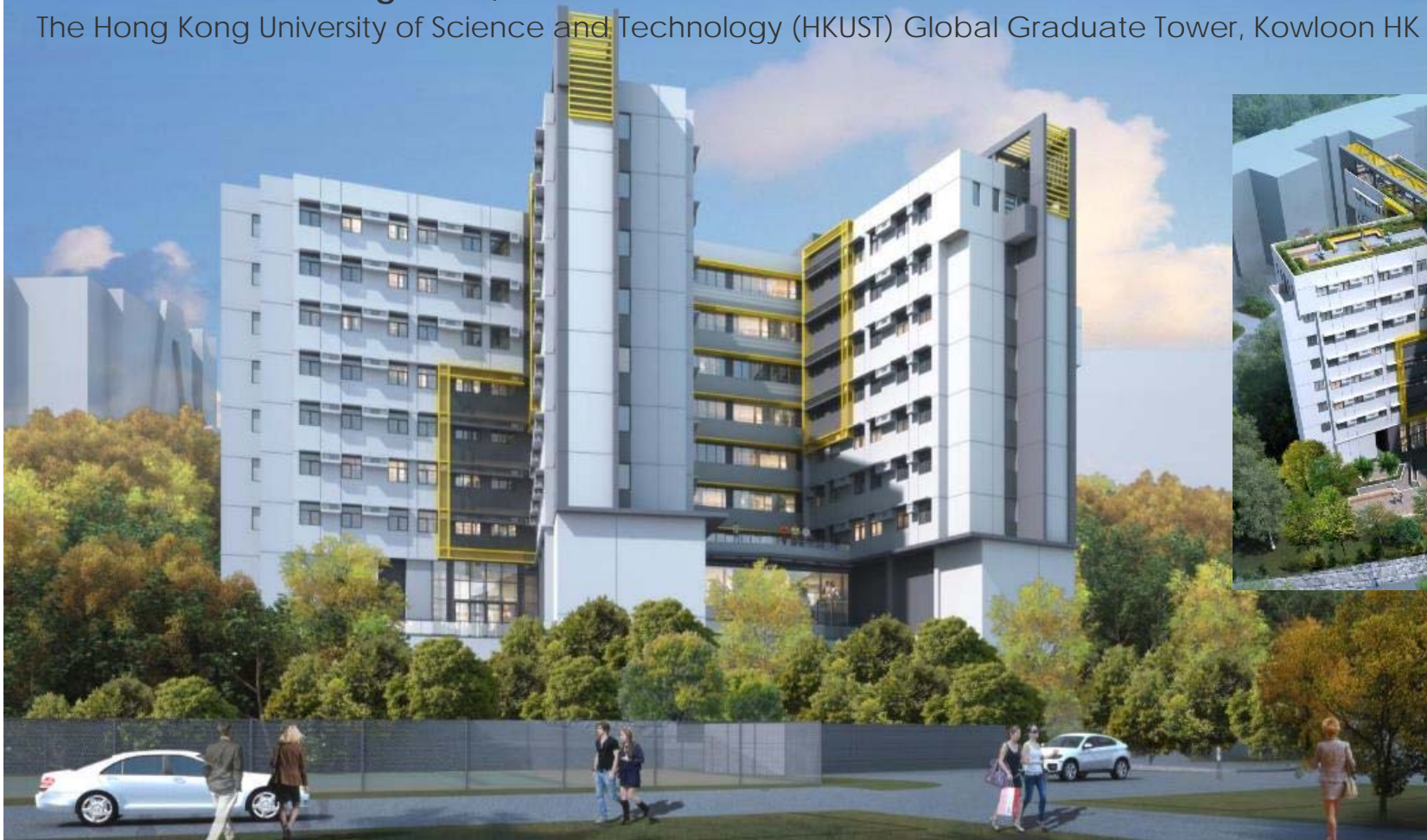
MASTER LAYOUT PLAN

This development is located in a heritage site, which will be renovated conservatively into low rise hotels, retails and restaurants. The historical design will be maintained and built by using modern construction methods. There are many open plazas along the coast that are turned into outdoor activity hubs.

Year 2017-2020
Client: N/A
Status: Detailed design

P&T Architects and Engineers, HK

The Hong Kong University of Science and Technology (HKUST) Global Graduate Tower, Kowloon HK



Located at Clear Water Bay, HKUST GG Tower is a 8 storeys building, which includes 400 bedspace of modernised dormitory for post-graduated students. It has 12250 sqm. glass-floor area with full of features to be beneficial from the climate in the area.

Year 2015-2019
Client: The Hong Kong University of Science and Technology
Status: Completed

P&T Architects and Engineers, HK
Po Leung Kuk Youth Hostel, Yuen Long HK



TOWER TYPICAL FLOOR PLAN



MAIN ENTRANCE



SINGLE BED UNIT

Po Leung Kuk Youth Hostel is packed of 1200 beds high rise, which every two floors has its own kitchen and laundry services. It also consists of full of amenities for students such as café, restaurants, study lounge and large outdoor landscape on top of the podium.

Year 2017-2020
Client : Po Leung Kuk
Status: Under construction

RMJM, Hong Kong
Cotai Strip Parcel 7&8, south of Macao



AERIAL PERSPECTIVE



NIGHT PERSPECTIVE



DAY PERSPECTIVE



CASINO 7 DROP-OFF



RAFFLE HOTEL DROP-OFF



HILTON HOTEL DROP-OFF

A new luxury iconic resort providing over 6,000 rooms and state of the art entertainment facilities such as casinos and retail shops.

Year 2008
Client: Venetian Cotai Limited
Status: Detailed Design

P&T Architects and Engineers, HK
 Beijing Feng Tai Mixed-Use Development Project, Beijing PRC



HOTEL ENTRANCE

LED SCREEN

ITALIAN MARBLE-
(NOCE TRAVERTINO)

BACKLIT TEXTURE
GLASS

ALUMINIUM CLADDING/
CHAMPAGNE GOLD COLOR



This is a mixed-use project comprises of a 150m tall Hotel/office tower and its hotel podium locating at the east of the site; a 60m tall office tower and two 50m tall office towers and a retail podium locating to the west of the site.

Year 2012-2014
 Client: China Fortune Land Investment Development Co., Ltd
 Status: Completed

P&T Architects and Engineers, HK
Guangzhou Matsunichi HQ Towers, Guangzhou PRC



MAIN ENTRANCE



NIGHT PERSPECTIVE

This high rise building consists of Hotel units on the top portion, office floors in the lower portion of the tower and retail area on the podium packed in 136,838 sq.m. of total GFA.

Year 2011-2014
Client: Goldin Property Group Ltd.
Status: Completed

P&T Architects and Engineers, HK
San Po Kong Holistic Centre, Kowloon HK



AERIAL PERSPECTIVE



SOUTH ELEVATION



SOUTH ENTRANCE



MULTI-PURPOSE HALL



DANCE STUDIO



EXCHANGED LOUNGE

Designed for teenagers and next generation users in mind, this holistic centre has numerous entertainment functions, multi-purposed facilities for sports and school activities, canteens, art exhibition areas and 130 beds of hostel, which are surrounded by landscape and roof top garden.

Year 2017-2020
Client: Tung Wah Group of Hospitals
Status: Under construction

P&T Architects and Engineers, HK
S1509 Site B retail development, Hefei PRC



NIGHT PERSPECTIVE



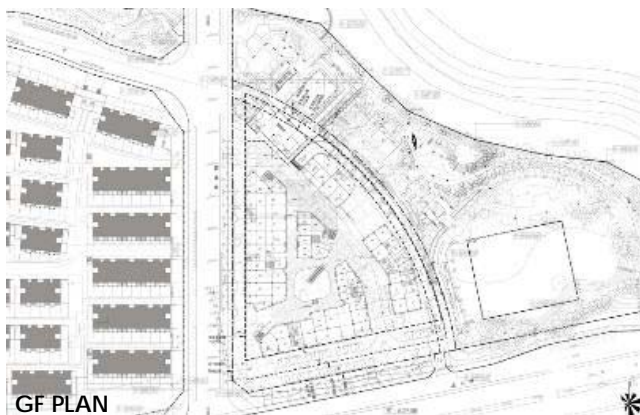
NORTH-EAST ENTRANCE



EAST ENTRANCE

The development is a group of 3-4 storeys retails, serviced apartment and office buildings enclosed together with a central courtyard. It has open-air circulated areas for customers to enjoy natural light and greenery outdoor landscape. It gives this project the iconic looks that remarkably stand out from other surrounding buildings.

Year 2017-2020
Client: N/A
Status: Completed



GF PLAN



AERIAL PERSPECTIVE

P&T Architects and Engineers, HK

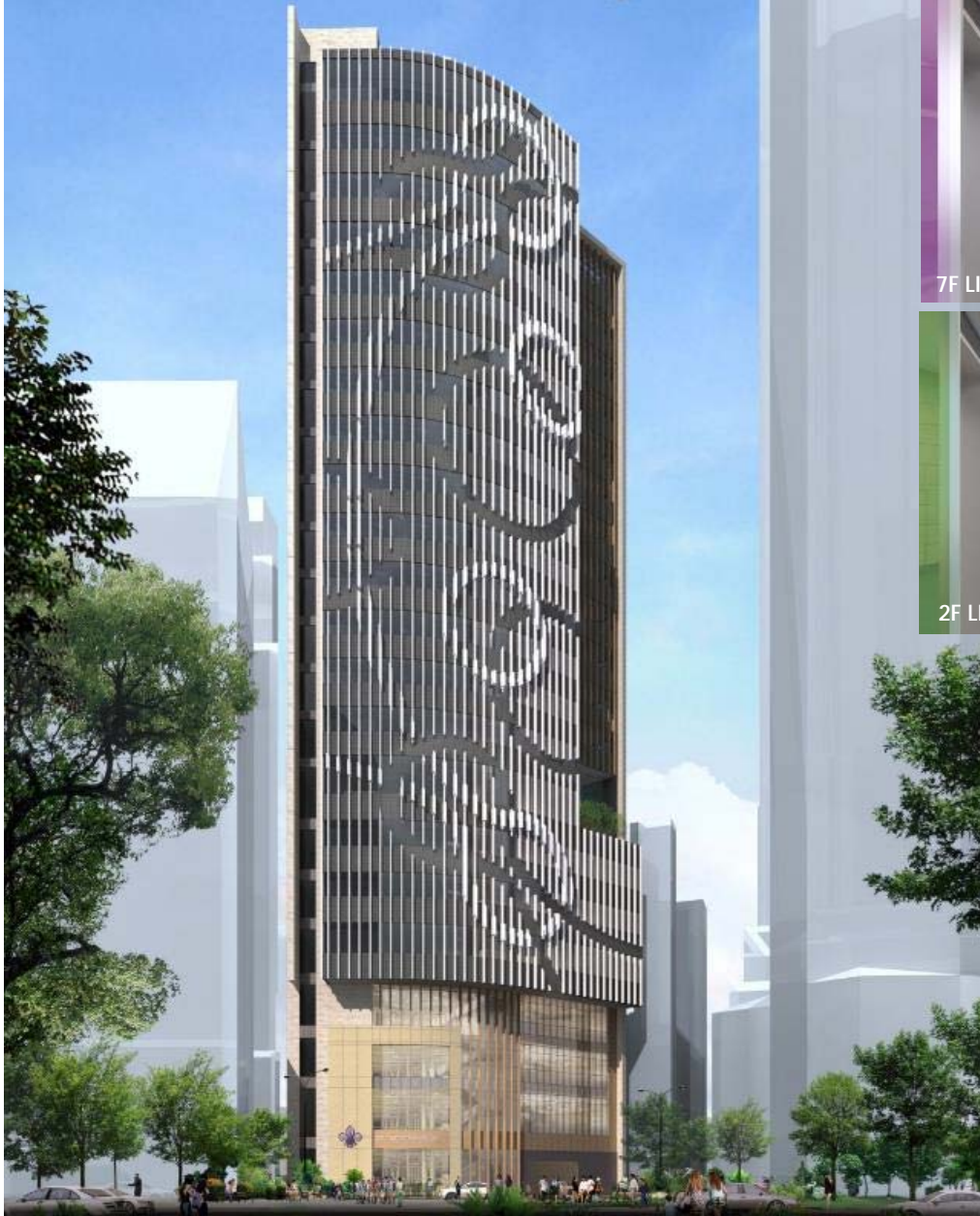
Commercial Development Project at Zhongshan port, Zhongshan PRC



This is a mixed-use commercial development consists of a 5-stars Le Meridien Hotel, 4 office towers and retail components at a total GFA of 254,000 sqm.

Year 2011-2018
Client: Guangdong Poly Real Estate Development Co, Ltd.
Status: Phase two schematic design

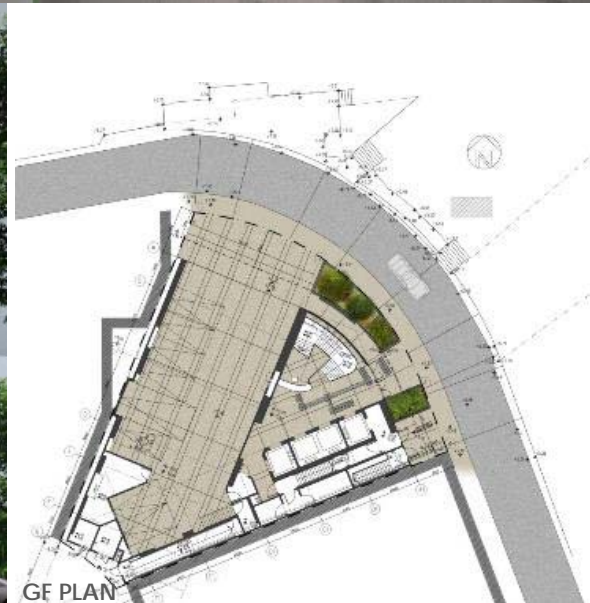
P&T Architects and Engineers, HK
Scout Association of Hong Kong Redevelopment, Wan Chai HK



7F LIFT LOBBY



2F LIFT LOBBY



SAHK Headquarter is a 21 storey institutional building consists of multipurpose hall, lecture hall, canteen, and parade garden at the podium floors; training rooms, functional rooms, SAHK headquarter office and a lounge at the tower floors.

Year 2015-2017
Client: Scout Association of Hong Kong
Status: Completed

P&T Architects and Engineers, HK
The mixed-use development in Honghuagang District, Zunyi PRC



AERIAL PERSPECTIVE



MASTER LAYOUT PLAN



WEST SIDE PERSPECTIVE

This project is located in a cultural and tourist hub of Zunyi province. This mixed-use development consists of many retail malls, commercial blocks, office buildings and various type of hotels in 248000 sq.m. above ground GFA.

Year 2018
Client: Yitian Group
Status: Competition

P&T Architects and Engineers, HK
Gleneagles Hong Kong Hospital, Aberdeen HK



The new 500 beds private hospital at Nam Fung Path, Wong Chuk Hang will serve the general public as well as academic bodies, the building design integrates "hotel design" concepts to a clinical environment to provide a comfortable, warm and welcoming atmosphere, and injects elements of arts to complement the healing and learning journey.

Year 2012-2017
Client: NSW Holdings Limited
Status: Completed



AERIAL PERSPECTIVE



PERSPECTIVE FROM TOLO HIGHWAY

P&T Architects and Engineers, HK

St. John College East & West wings redevelopment, Pok Fu Lam HK



4F AMPHITHEATRE



ROOFTOP CAR PARKING



5F PLAN



3F ALUMNI REUNION DINNING HALL

The redevelopment includes of 4 existing buildings renovation and a brand new 15 floors dormitory at the back of the site. Due to steep landscape, a new circular ramp for vehicles is placed on the side entrance to accommodate the roof top car parking.

Year 2013-2017

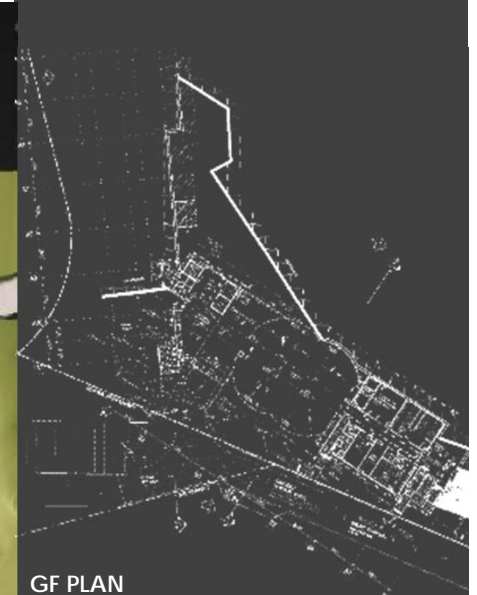
Client: St. John College

Status: GBP submission

P&T Architects and Engineers, HK
Junk Bay Chinese Permanent Cemetary, Sandy Bay HK



AERIAL VIEW



GF PLAN

Government funded Junk Bay cemetery consists of both indoor and outdoor cemeteries. It has a main building with a large meditation hall, office area, columbarium, niche storages, separate halls for rent and prayer rooms. The outdoor cemetery can be supported about 35,000 niches additionally from the existing cemetery on the West side.

Year 2018-2020
Client: N/A
Status: GBP submission



MAIN BUILDING



MULTI-PURPOSE HALL ENTRANCE

P&T Architects and Engineers, HK

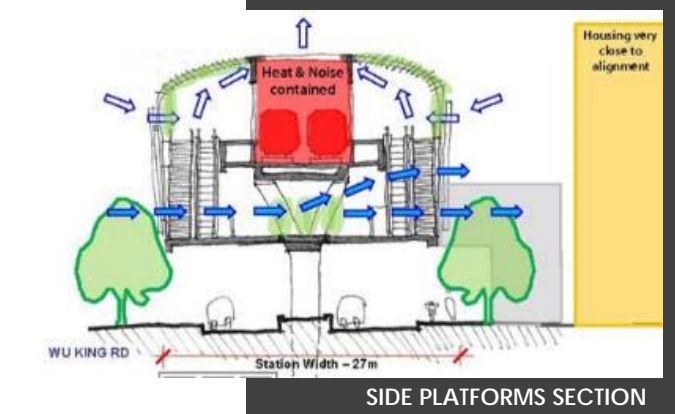
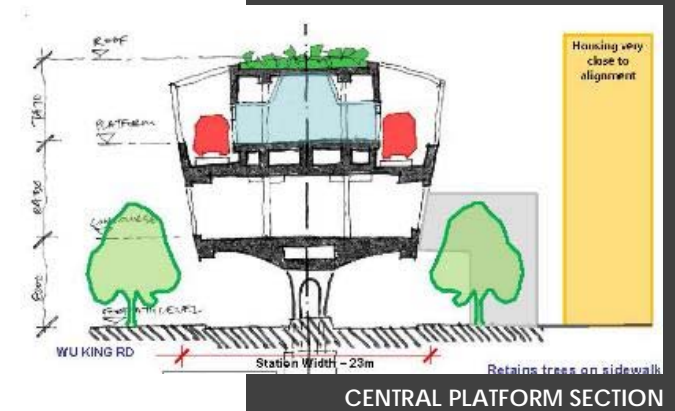
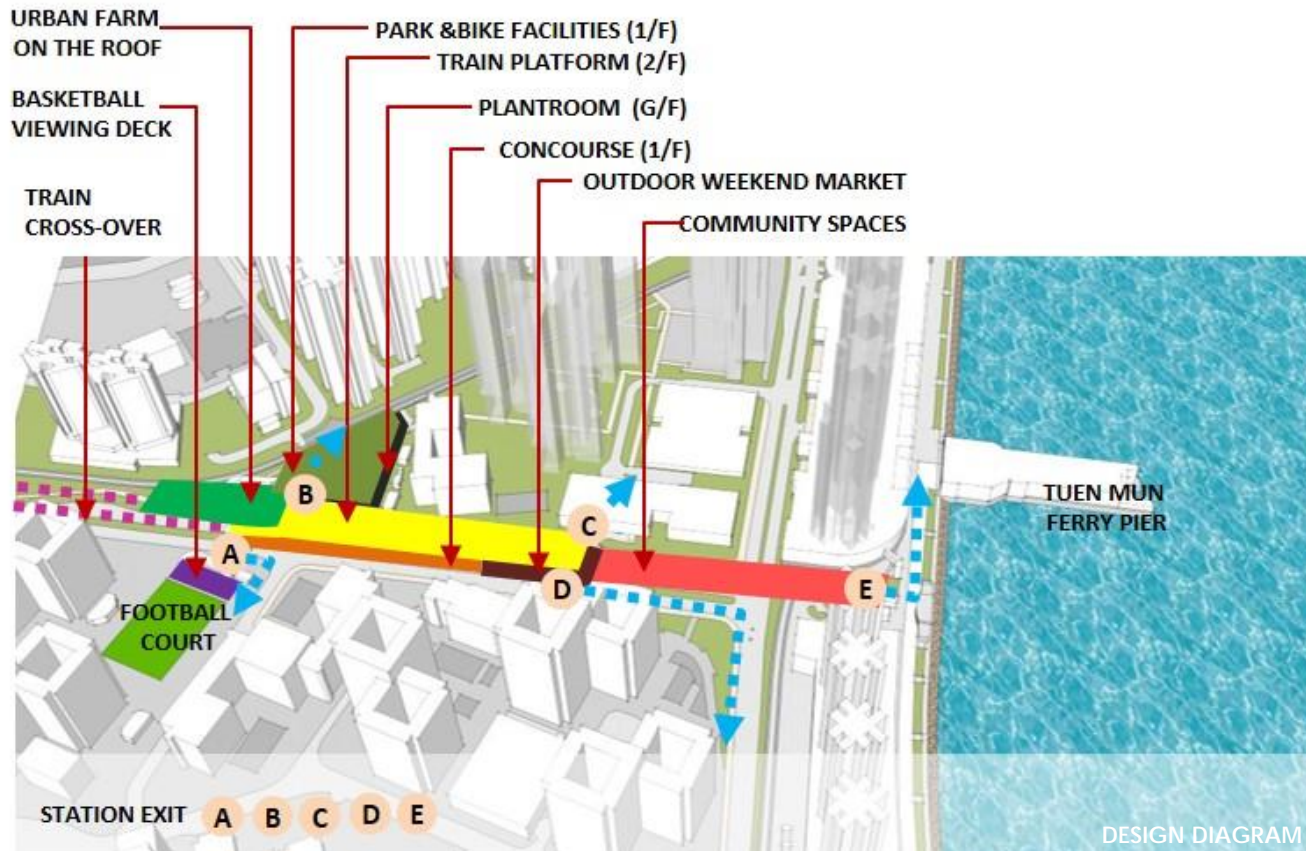
Design and Construction of Redevelopment of Queen Mary Hospital Phase 1, Aberdeen HK



Hong Kong government plans to redevelop Queen Mary Hospital by building a brand new 28 Floors inner wards, includes additional medical services on its podium and renovating few existing buildings, research lab and car parking.

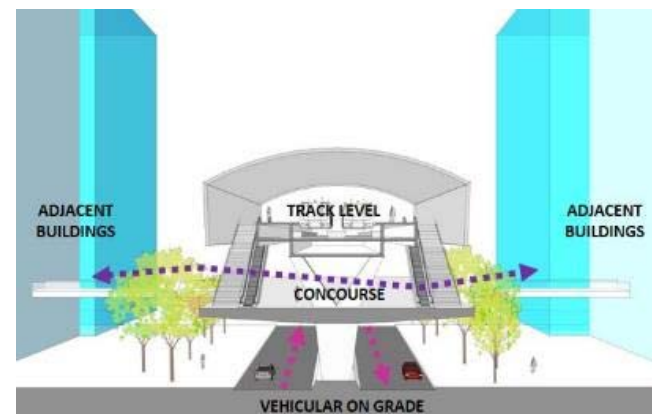
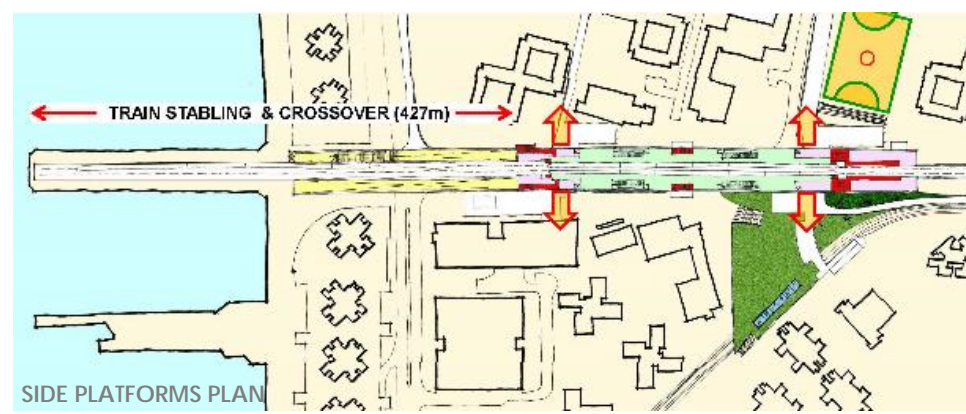
Year 2017-2018
Client: HK Hospital Authority
Status: Competition

P&T Architects and Engineers, HK
Tuen Mun South MTR, Kowloon HK



Brainstorming project for innovative design MTR station in Kowloon, the design concept of this MTR station is to extend the usage of the station not only for transportation but to be a community hub and area for various social activities with greenery landscape.

Year 2018
Client: Hong Kong MTR Corporation
Status: Competition



KRIT VICHEANSIN



Profession	Architect Property Development (Facility management)
Position	Senior Architect (ACT, Thailand) Architect (ACT, Thailand) Architectural Assistant 3D Visualisation Architect
Experience	12 years
Date of birth	03.1983
Nationality	Thai
Citizenship	Thailand Hong Kong (Permanent Resident)
Address	26/474 Moo 6 Soi Phahoyothin64/1 Saimai, Bangkok, Thailand 10220
Tel.	+666 4061 2031
E-mail	Krit.Vicheansin@gmail.com Sutlore@hotmail.com
Website	https://sutlore.wixsite.com/home

Key Experience

Krit has been working in architectural firms for 12 years. He is responsible for façade design, detailed design and 3D modelling by SketchUp for the most parts. Most of the projects he has worked on recently are mix-use development, hotels and high-rise buildings.

In 2022, Krit worked with his relative in engineering consultant field as a new experiment. Working in small local projects, he has more understanding about elaborating architectural and engineering works, how to manage labours and project planning.

Skills

AutoCAD, Adobe Photoshop, Sketch Up - Proficient
MS Office, Epic Twin Motion, MS Movie Maker, Adobe In Design - Good
Autodesk Revit, Davinci Resolve - Moderate

Other : decent video animation editing, technical knowledge of computer hardware, enthusiastic photography skill

Employment History

Mar 2022 – Jan 2023	SCTP Joint Venture – Engineering and Consultant
Dec 2011 – Jul 2020	P&T Architects & Engineers, Ltd.
Dec 2010 – Feb 2011	Amnuaysilp Karnchang co., Ltd. (2 months -the summer break)
Oct 2007 - Oct 2008	RMJM Hong Kong Limited
Oct 2006 - Oct 2007	RMJM (Thailand) Co., Ltd.

Education

May 2001 – Mar 2006	Bachelor of Architecture from Khon Kaen University, Thailand
Jun 2009 – Feb 2010	UEEC (University English Entry Course) at UNSWL
Mar 2010 – Jul 2011	Master Property Development (MPD) from UNSW, Australia